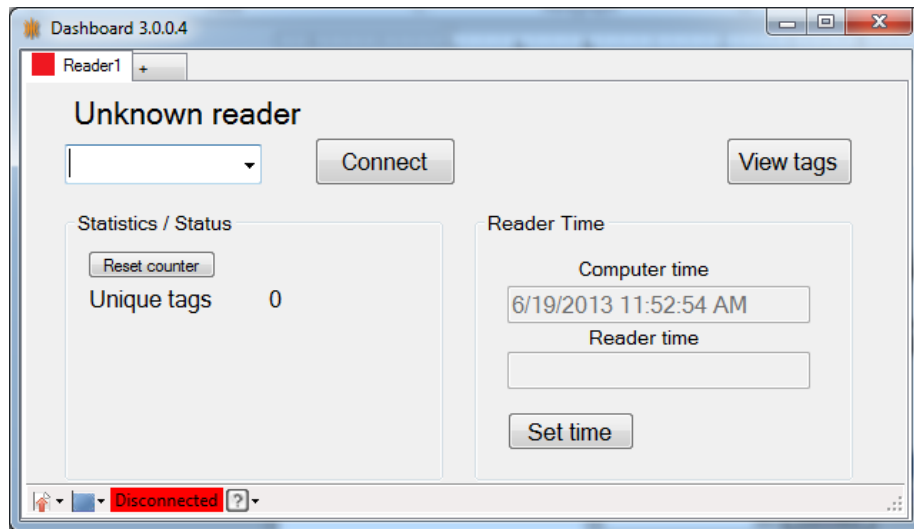


# IPICO SPORTS DASHBOARD 3.x

## USER'S GUIDE



## NOTIFICATIONS AND ADVISEMENT

### PRODUCT UPDATES

The IPICO Sports Reader Dashboard client contains an internal update manager. This update manager will prompt a user at startup if updates to the current version are available. If a new edition becomes available, and cannot be retrieved using current update management software, notification will be given to users.

### REVISION HISTORY

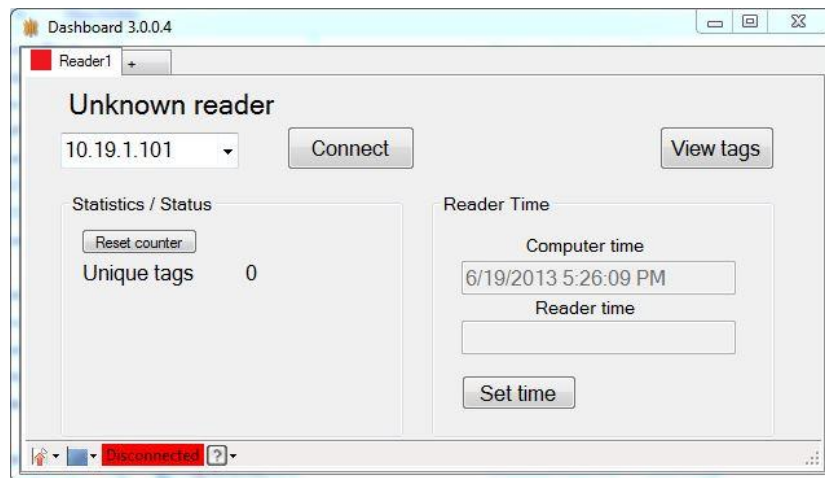
VERSION	DATE	PURPOSE
Issued Version 1.00	26/02/2009	Compilation, editing for issuance.
Issued Version 2.00	10/12/2009	Updated advanced functionality.
Issued Version 3.0.0	06/20/2013	Total redesign, added database functionality

## 1 INTRODUCTION

The IPICO Sports Reader Dashboard manages reader time, file download, reader management functions and many more IPICO Sports reader services for both the Elite and Lite Reader models. This guide is meant to provide an overview of the utility's functionality.

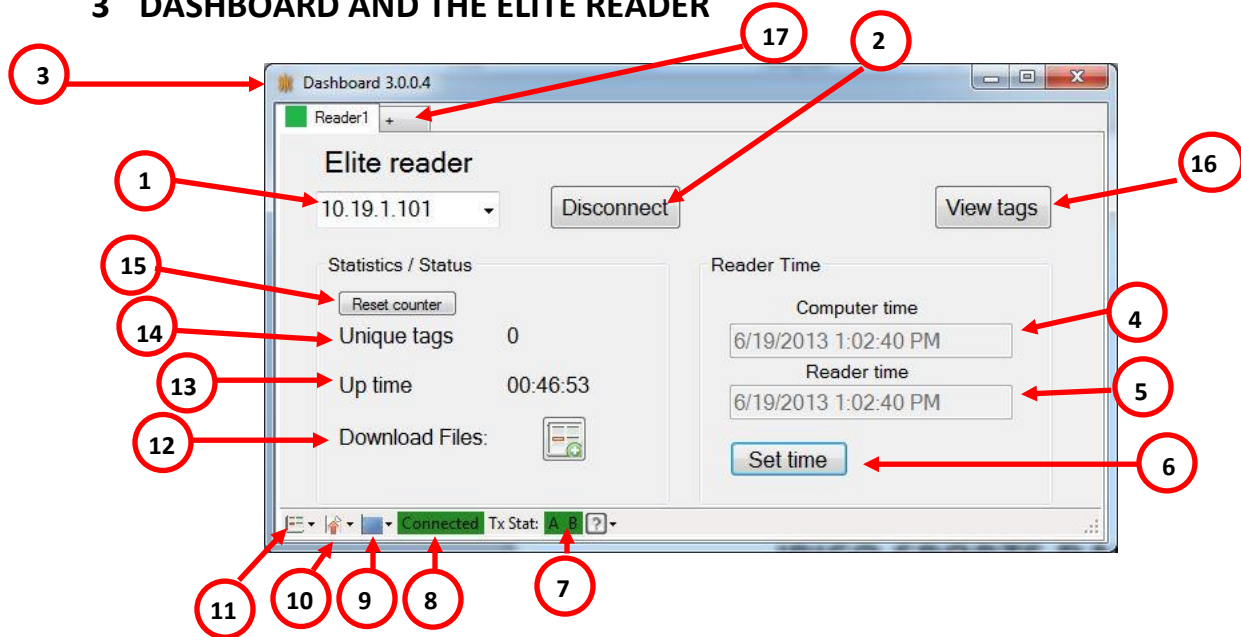
## 2 CONNECTING TO A READER

The IPICO Sports Reader Dashboard communicates with reader products using T.C.P./I.P. protocol, a network protocol that uses Ethernet connectivity. With a reader product powered on and connected via Ethernet cable to a computer running Dashboard, input the reader's I.P. (Internet Protocol) address (printed on a white label affixed to the face of the reader) as pictured below:



In the case above, the reader in use has an I.P. (Internet Protocol) address of 10.19.1.101 which is entered into the drill-down text box in the upper left of the Dashboard window. Once the appropriate address has been entered, click "Connect" to connect the Dashboard to the chosen reader product.

### 3 DASHBOARD AND THE ELITE READER



1. IP Address entry

2. "Connect" button

3. Version number

4. Current Computer Time

5. Current Reader Time

6. "Set Time" button

7. Transmitter status monitor

8. Ethernet status monitor

9. Dashboard window menu

10. File adjustment menu

11. Elite reader options menu

12. File download options

13. Reader "Up time" monitor

14. Unique tag count

15. Reset unique tag counter

16. View Tags Screen

17. "Add Reader Tab" button

#### 1. IP Address entry

To connect to a reader, enter the reader's I.P. (internet protocol) address (affixed to the reader face on a printed white label) into this drill-down text box.

#### 2. "Connect" button

Once the correct network details are entered into diagram #1, clicking the "Connect" button will initiate the connection between the Dashboard client and the chosen IPICO Sports reader product.

#### 3. Version number

Over time, as Dashboard is updated, this number will change. Contact IPICO Sports if a newer version is believed to be released, and the running copy of Dashboard has not updated. The Dashboard's built-in auto update feature will check for updates each time the application starts up and if the computer has access to the Internet.

#### 4. Current Computer Time

The IPICO Sports Reader Dashboard uses the local computer clock as a reference point by which to set reader product time. In order to monitor the possible difference between the reader and computer time, the current computer time of the local machine is displayed.

#### 5. *Current Reader Time*

In order to ensure that the time on the selected IPICO Sports reader product is correct, the IPICO Sports Reader Dashboard monitors the reader time and displays it in this space.

#### 6. *“Set Time” button*

If there is an undesired time offset between computer and reader times, clicking the “Set Time” button will set the connected reader product’s time equal to the computer time the moment that the button is clicked.

#### 7. *Transmitter status monitor*

When connected to the IPICO Sports Elite Reader, the reader’s transmitter status is monitored by this portion of the Dashboard window. A green background around the “A” and “B” labels indicates proper operation.

#### 8. *Ethernet status monitor*

Similar to the transmitter status, the IPICO Sports Reader Dashboard monitors the status of the local machine’s Ethernet connection to the desired reader.

If, for any reason, the Dashboard client loses connection to the connected reader, the Dashboard will report its disconnection by opening a “Connection Reset” window on the computer screen.

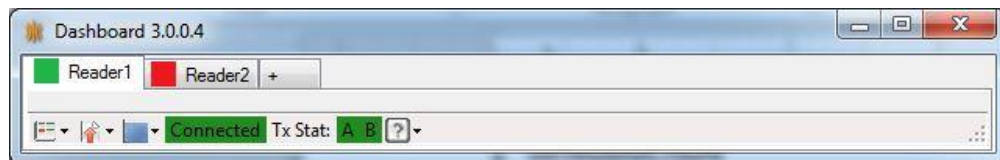


#### 9. *Dashboard window menu*

The Dashboard window menu will allow the configuration area to roll up so just the monitor area is visible.

##### a. *Rollup window*

To conserve window space, it may be advantageous to “roll up” the Dashboard window. Doing so will change the window’s physical appearance similar to that pictured below:



##### b. *Rolldown window*

If selected, the previously “rolled up” window will roll down to reveal the configuration area again.

#### 10. *File adjustment menu*

The File adjustment menu will allow you to open the “View Tags” screen (see item #16 below) and save the current tag data

#### 11. *Elite reader options menu*

The Elite reader options menu will allow you to clear reader history and upload TimeLink GPRS encryption certificates.

##### a. *Upload GPRS certificate*

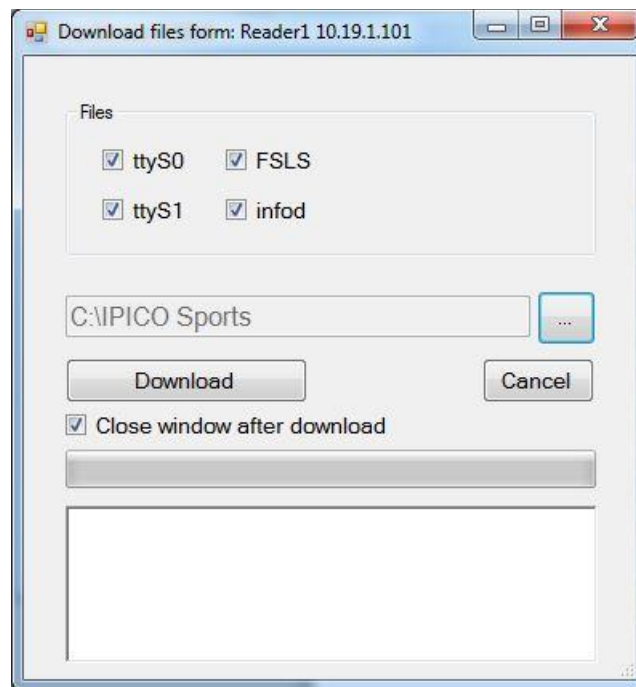
This option will allow the selection of a TimeLink reader encryption key package and upload it to the proper location on the reader for installation and activation. The TimeLink key packages are available from the IPICO Sports website with an authorized user login.

b. Clear Reader History

Over the course of an event, the IPICO Sports Elite Reader will record data to its internal hard-drive. To clear the data from previous events, clicking this option will execute the reader's history-clearing command. **Once deleted, these files cannot be recovered.**

*12. File download options*

Because the IPICO Sports Elite Reader has the ability to store files, these files can be downloaded from the reader using these options.



Click the desired files, choose the desired download location and click the download button to initiate the file transfer.

*13. Reader "Up time" monitor*

This value monitors the amount of time the reader has been running since startup.

*14. Unique tag count*

When a new, un-seen tag passes through the connected reader's timing point, this number will increment.

*15. Reset Unique Tag counter*

Click this button to reset the unique tags counter to zero. The tag data is not affected by this button, only the counter.

*16. "View Tag" screen access button*

The View Tags screen button will open a new window and display the currently available tags. From this screen there are a number of tag data management options available, see the tool tips when you hover the mouse over the buttons on this screen for details. These features will be detailed in future version of this document.

Reader1

Update Import Export Fix times Clear

From [From date] [From time] Apply From [From computer time]

To [To date] [To time] To [To computer time]

[Dec id] [Contains text] ☒ ☒

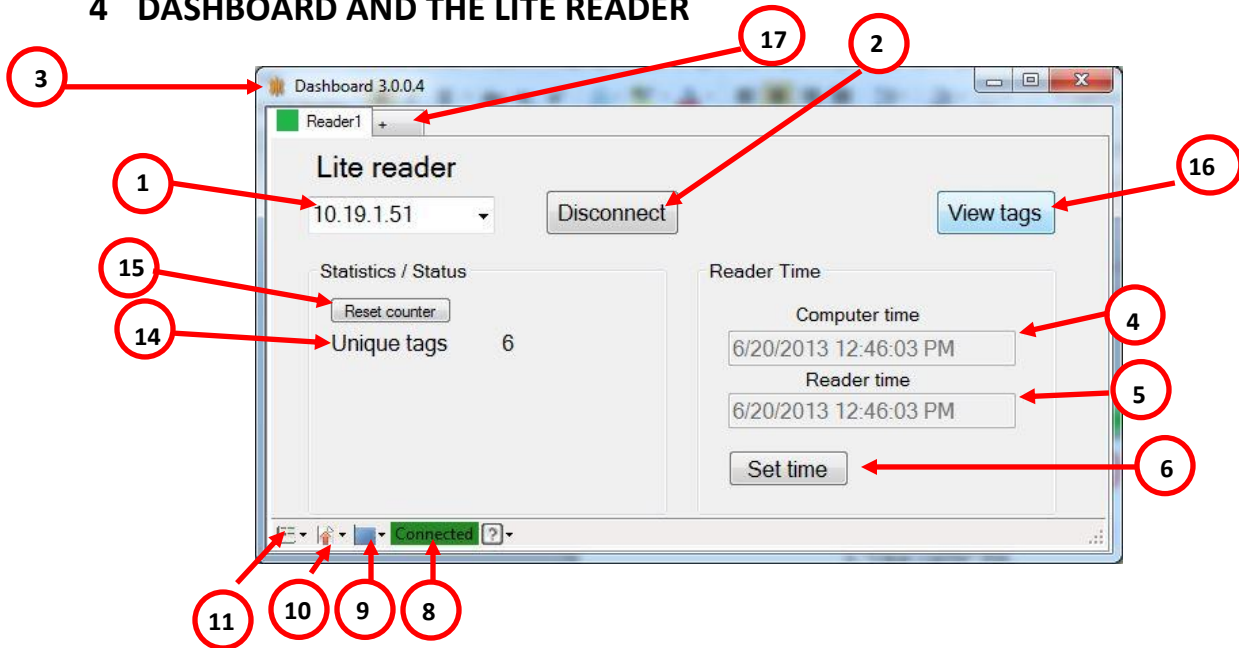
	id	Dec id	Tag uid	Chan1	Chan2	Date	Time	ms	FSLs	Computer Date/Time
▶	1	1	05800160da2c	1	0	130619	132142	57	FS	6/19/2013 1:21:43 PM
	2	1	05800160c01d	1	0	130619	132142	61	FS	6/19/2013 1:21:43 PM
	3	1	0580015adf98	1	0	130619	132142	63	FS	6/19/2013 1:21:43 PM
	4	1	05800160cdeb	1	0	130619	132142	65	FS	6/19/2013 1:21:43 PM
	5	1	0580015ab6d7	1	0	130619	132142	75	FS	6/19/2013 1:21:43 PM
	6	1	0580015ea4d9	1	0	130619	132142	83	FS	6/19/2013 1:21:44 PM
	7	1	05800160da2c	1	0	130619	132147	17	LS	6/19/2013 1:21:53 PM
	8	1	05800160c01d	1	0	130619	132146	97	LS	6/19/2013 1:21:53 PM
	9	1	0580015adf98	1	0	130619	132146	95	LS	6/19/2013 1:21:53 PM
	10	1	05800160cdeb	1	0	130619	132146	93	LS	6/19/2013 1:21:53 PM
	11	1	0580015ab6d7	1	0	130619	132146	89	LS	6/19/2013 1:21:53 PM
	12	1	0580015ea4d9	1	0	130619	132146	90	LS	6/19/2013 1:21:53 PM

111

### 17. "Add Reader" tab

Click this tab to open a new reader tab so additional readers can be monitored from this single application window.

## 4 DASHBOARD AND THE LITE READER



1. IP Address entry		9. Dashboard window menu
2. "Connect" button		10. File adjustment menu
3. Version number		11. Lite reader options menu
4. Current Computer Time		
5. Current Reader Time		
6. Set Time button		14. Unique tag count
		15. Reset unique tag counter
8. Ethernet status monitor		16. "View Tags" window
		17. "Add Reader Tab" button

### 1. IP Address entry

To connect to a reader, enter the reader's I.P. (internet protocol) address (affixed to the reader face on a printed white label) into this drill-down text box.

### 2. "Connect" button

Once the correct network details are entered into diagram #1, clicking the "Connect" button will initiate the connection between the Dashboard client and the chosen IPICO Sports reader product.

### 3. Version number

Over time, as Dashboard is updated, this number will change. Contact IPICO Sports if a newer version is believed to be released, and the running copy of Dashboard has not updated. The Dashboard's built-in auto update feature will check for updates each time the application starts up and if the computer has access to the Internet.

### 4. Current Computer Time

The IPICO Sports Reader Dashboard uses the local computer clock as a reference point by which to set reader product time. In order to monitor the possible difference between the reader and computer time, the current computer time of the local machine is displayed.



#### 5. *Current Reader Time*

In order to ensure that the time on the selected IPICO Sports reader product is correct, the IPICO Sports Reader Dashboard monitors the reader time and displays it in this space.

#### 6. *“Set Time” button*

If there is an undesired time offset between computer and reader times, clicking the “Set Time” button will set the connected reader product’s time equal to the computer time the moment that the button is clicked.

#### 8. *Ethernet status monitor*

Similar to the transmitter status, the IPICO Sports Reader Dashboard monitors the status of the local machine’s Ethernet connection to the desired reader.

If, for any reason, the Dashboard client loses connection to the connected reader, the Dashboard will report its disconnection by opening a “Connection Reset” window on the computer screen.

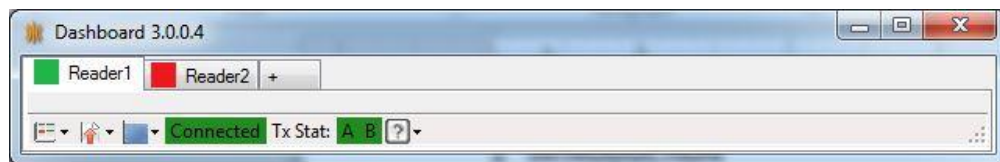


#### 9. *Dashboard window menu*

The Dashboard window menu will allow the configuration area to roll up so just the monitor area is visible.

##### c. Rollup window

To conserve window space, it may be advantageous to “roll up” the Dashboard window. Doing so will change the window’s physical appearance similar to that pictured below:



##### d. Rolldown window

If selected, the previously “rolled up” window will roll down to reveal the configuration area again.

#### 10. *File adjustment menu*

The File adjustment menu will allow you to open the “View Tags” screen (see item #16 below) and save the current tag data

#### 11. *Lite Reader options menu*

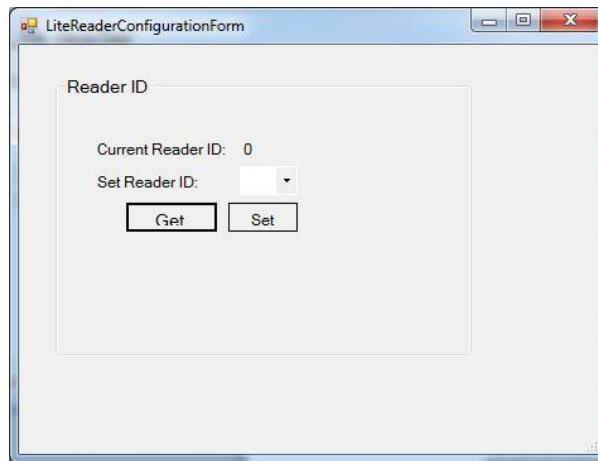
Clicking this option will bring up the following two options:

##### a. First Seen Filter

Though the IPICO Sports Lite Reader cannot produce the results of a “First-seen, last-seen” mode, it can accommodate a “First-seen” mode enabled by clicking on this option. Under this option there are two choices, “Arm” and “Disarm.” Once armed, the filter does not automatically disarm – this must be done through the “Disarm” sub-option.

##### b. Reader Configuration

The IPICO Sports Lite Reader produces tag reads that have a specific header character. To change this header character, click the “Reader Configuration” option to open the following window, where this ID can be changed:



Selecting an ID from the “Set Reader ID” drill-down, click the “Set” button to set the reader ID to the selected value.

#### 14. Unique tag count

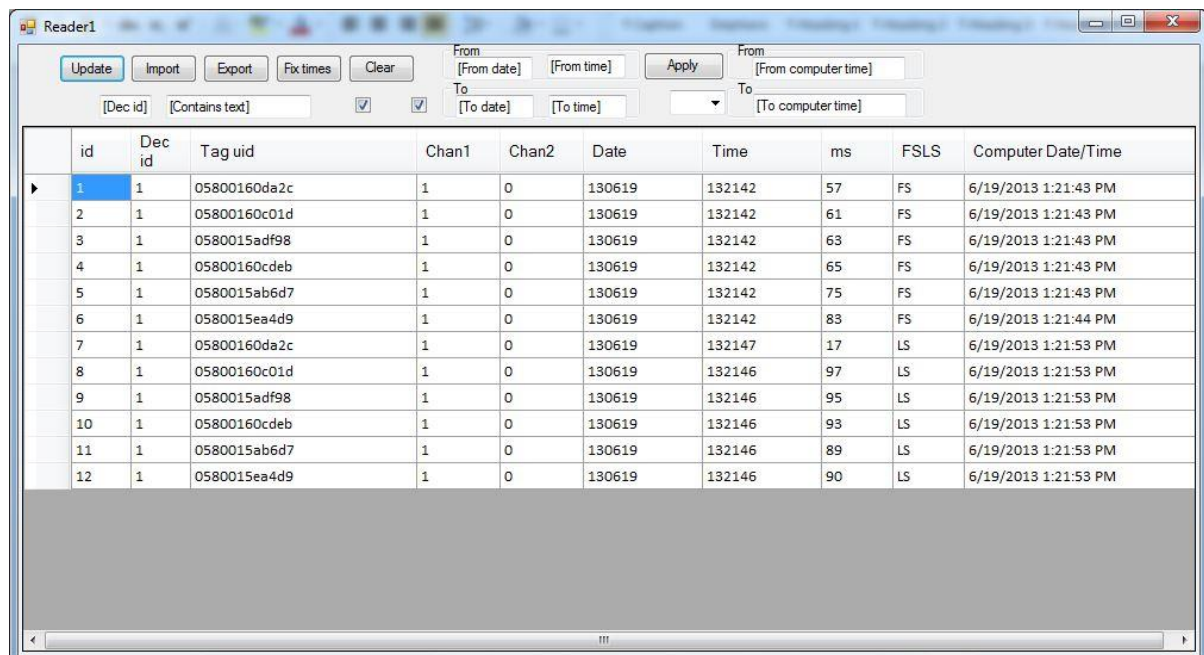
When a new, un-seen tag passes through the connected reader’s timing point, this number will increment.

#### 15. Reset Unique Tag counter

Click this button to reset the unique tags counter to zero. The tag data is not affected by this button, only the counter.

#### 16. “View Tag” screen access button

The View Tags screen button will open a new window and display the currently available tags. From this screen there are a number of tag data management options available, see the tool tips when you hover the mouse over the buttons on this screen for details. These features will be detailed in future version of this document.



	id	Dec id	Tag uid	Chan1	Chan2	Date	Time	ms	FLS	Computer Date/Time
▶	1	1	05800160da2c	1	0	130619	132142	57	FS	6/19/2013 1:21:43 PM
	2	1	05800160c01d	1	0	130619	132142	61	FS	6/19/2013 1:21:43 PM
	3	1	0580015adf98	1	0	130619	132142	63	FS	6/19/2013 1:21:43 PM
	4	1	05800160cdeb	1	0	130619	132142	65	FS	6/19/2013 1:21:43 PM
	5	1	0580015ab6d7	1	0	130619	132142	75	FS	6/19/2013 1:21:43 PM
	6	1	0580015ea4d9	1	0	130619	132142	83	FS	6/19/2013 1:21:44 PM
	7	1	05800160da2c	1	0	130619	132147	17	LS	6/19/2013 1:21:53 PM
	8	1	05800160c01d	1	0	130619	132146	97	LS	6/19/2013 1:21:53 PM
	9	1	0580015adf98	1	0	130619	132146	95	LS	6/19/2013 1:21:53 PM
	10	1	05800160cdeb	1	0	130619	132146	93	LS	6/19/2013 1:21:53 PM
	11	1	0580015ab6d7	1	0	130619	132146	89	LS	6/19/2013 1:21:53 PM
	12	1	0580015ea4d9	1	0	130619	132146	90	LS	6/19/2013 1:21:53 PM

*17. "Add Reader" tab*

Click this tab to open a new reader tab so additional readers can be monitored from this single application window.